

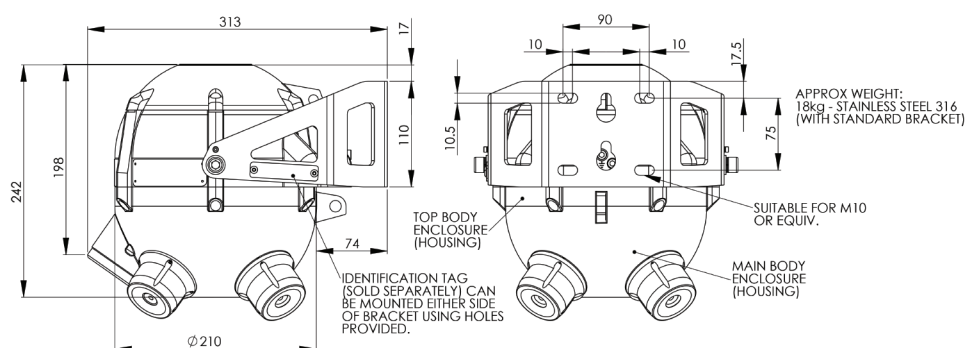
Incus Ultrasonic Gas Leak Detector Ultrasonic Gas Detector

| Instantaneous response to all gas leaks (toxic, combustible, or inert) | Operates in extreme temperatures | Automated electronic self-test offers failsafe operation |
 | Widest area of coverage through four independent sensors | 4–20 mA analog or stepped, “multi-drop” RS-485 digital interface, and HART® communication protocol | Certified worldwide for hazardous locations | Innovative mapping tool helps optimize coverage for a target risk | Programmable time delays screen intermittent unwanted alarm sources |

IMAGE



DIMENSION (Unit : mm)



SPECIFICATION

ELECTRICAL SPECIFICATIONS	
Detection Frequency Range	25 kHz to 100 kHz
Dynamic Range	40–120 dB (standard); 58–104 dB or 40–200 dB
Area Coverage	2 to 20 meters (7 to 65 feet) radius (leak pressure, size and background level dependent)
Response Time	Instantaneous (< 1 s - speed of sound)
Programmable Alarm Delay	Configurable alarm delay via one second increments
Operating Temperatures	-40 °C to +85 °C (-40 °F to +185 °F), option -55 °C (-67 °F), NOT c FM us approved
Operating Humidity Range	0 to 100 % RH, non-condensing
Self Test	Continuous electronic check of sensor integrity
Ingress Protection	Rated IP66/67 & NEMA Type 4X to withstand harsh environments
Enclosure Material	AISI 316 Stainless Steel
Mounting Bracket	AISI 316 Stainless Steel (included)
Weight (with bracket)	18 kg (40 lbs)
Conduit Entry	½" or ¾" NPT Available as Single Entry (all listings) or M20/M25 Single Entry and all Dual Entry (all listings EXCEPT FM)*
Output Signals	Analog [0 mA: Zero/Low Power, 0.5 mA to 4.0 mA: Detector faults, 4–20 mA] Two Form C Relay Contacts [Error/Fault, Alarm, Maintenance] RS-485 Digital Interface HART® Protocol
Approvals/Classifications	IECEX : ITS 10.0004X ATEX : Ex d IIB+H2T4 Gb (Tamb -40 °C to +85 °C); (Tamb -55 °C to +85 °C) option c FM us : CL1 Division 1, GP B, C, D T4 CL1 Zone I, AEx/Ex d IIB+H2 T4 EAC : RU C-GB. 15 04.B.00297 KOSHA : 14-KB4B0-0294X INMETRO : UL-BR 15.0063X ABS : 13-LD1021861 DNV : A-13745 SIL2 : suitable EMC : EN 50270 2006, EN 61000-6-3 2007, EN 61000-6-2 2005"
Input Voltage	24 VDC (15 to 30 VDC)
Power Consumption	6 W - standard operation - GDU-01-TT Test Transmitter: Handheld Rechargeable Ultrasonic Sound Emitter
Accessories	- GDU-01-MT Mapping Tool: Handheld Rechargeable Ultrasonic Sound Receiver - GDU-PTV Performance Target Verification Kit

