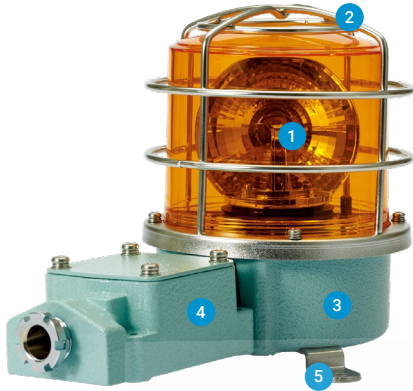


Heavy-Duty Signal Lights/Beacons for Heavy Duty Signalings

SH1 / SH2 Series

Superior durability with fully enclosed structure and corrosion resistance, suitable for vessels and heavy industry applications



PRODUCT SPECIFICATION

SH1 Series | SH2 Series

Materials Lens-PC, Housing-Al, STS316L(SH1-SUS)

Protection cage-ST316L, Reflector-PC,
Reflector for bulb type-Heat resistant ABS, Bracket-ST316L

Protection rating IP66

Housing standard color MUNSELL No. 7.5BG 7/2

Cable entry 1/2" PF

- Aluminum housing and polycarbonate lens material provides excellent impact resistance under seismic conditions
- STS housing provides superior durability and corrosion resistance(SH1-SUS)
- Excellent hermetic structure that blocks water and dust
- Can select a variety of light sources (Bulb, LED, and xenon) for your application needs and environmental conditions
- Terminals located inside the terminal box or product

1 Lenses

- Utilizes a strong and durable polycarbonate material with excellent shock and vibration resistance
- The lens surface has two types depending on the light source function-Light diffusion type and light transmission type



Light transmission type

LED revolving type
Bulb revolving type
SH()LR | SH()



Light diffusion type

LED steady/flashing type
xenon lamp strobe type
SH()L | SH()S

2 Protection cage

- The durable protection cage is made of corrosion resistant stainless steel that prevents damage to the lens from external contact
- Materials: STS316L

3 Housing

- The special aluminum body housing features superior durability
- STS housing provides superior durability and corrosion resistance(SH1-SUS)
- The housing is corrosion resistant from a special anodized surface treatment process
- Materials: Al, STS316L(SH1-SUS)

4 Terminal box

- Terminal box is located on the side of housing for easy wiring
- Materials: Al

5 Brackets

- Stainless steel mounting bracket is conveniently attached to the outer surface of the product
- Materials: STS316L

A Variety of Selectable Light Source and Function Combinations

You can select from a variety of light sources for your work environment, condition, and purpose. Basic specifications are as follows.

- LED revolving type
- LED steady/flashing type
- xenon lamp strobe type
- Bulb revolving type

Customization

- LED Strobe type
- LED revolving type

Product Categories



Standard type

- Protection cage or terminal box not attached
- Terminals located inside the housing
- Use in environments that has low probability of damage to the lens due to external forces
- SH1/SH2 Series is available in this model



Built-in terminal box

- Equipped with a terminal box for easy wiring
- Use in environments that has low probability of damage to the lens due to external forces
- SH1T()/ SH2T() is available in this model



Protection cage mounted type

- Equipped with a Protection cage
- Terminals located inside the housing
- Use in environments that has low probability of damage to the lens due to external forces
- SH1()P/SH2()P is available in this model



Terminal box and protection cage mounted type

- Equipped with a protection cage and a terminal box
- Terminal box enables easy wiring
- Damage to the lens from external forces can be prevented with protection cage
- SH1T()P/ SH2T()P is available in this model



SH1



SH2T

PRODUCT SPECIFICATION

SH1 | SH2

Materials Lens-PC, Housing-AI, STS316L(SH1-SUS)
 Protection cage-ST316L, Reflector-Heat resistant ABS
 Bracket-ST316L
Ambient operating temperature -20°C to +50°C
Protection rating IP66
Housing standard color MUNSELL No. 7.5BG 7/2
Cable entry 1/2" PF
Revolving speed 120-140RPM

- Excellent light diffusion effect with multi faced reflector
- Adopts a special power transmission system that reduces noise and wear
- STS housing provides superior durability and corrosion resistance(SH1-SUS, SH1P-SUS)

SH1 Bulb Revolving Beacons

Model number	Voltage	Current	Bulb			Certificates	Color
			Spec	Standard	Parts no		
SH1	Standard type	DC12V 1.55A	12V15W	G23 15S	17	CCS	R-Red
SH1-SUS	Standard type	DC12V 1.55A	12V15W	G23 15S	17		
SH1P	Protection cage type	DC24V 850mA	24V15W	G23 15S	18	CE	A-Amber
SH1P-SUS	Protection cage type	DC24V 850mA	24V15W	G23 15S	18		G-Green
SH1T	Terminal box type	AC110V 200mA	12V15W	G23 15S	17		B-Blue
SH1TP	Protection cage and terminal box type	AC220V 100mA	12V15W	G23 15S	17		

※ CE compliant: DC24V, CCS(SH1 / SH1P only)

SH2 Bulb Revolving Beacons

Model number	Voltage	Current	Bulb			Certificates	Color
			Spec	Standard	Parts no		
SH2	Standard type	DC12V 1.55A	12V15W	G23 15S	17	CE	R-Red
SH2P	Protection cage type	DC24V 850mA	24V15W	G23 15S	18		A-Amber
SH2T	Terminal box type	AC110V 200mA	12V15W	G23 15S	17		G-Green
SH2TP	Protection cage and terminal box type	AC220V 100mA	12V15W	G23 15S	17		B-Blue

※ CE compliant: DC24V

SH1 | SH2 Bulb Revolving Beacons Specification Category and Products Weight Chart

Type	SH1 Series	SH2 Series
Lens diameter	Φ125mm	Φ150mm
Standard	SH1 (1.61kg) SH1-SUS (2.05kg)	SH2 (1.77kg)
Built-in protection cage	SH1P (1.86kg) SH1P-SUS (2.30kg)	SH2P (2.06kg)
Built-in terminal box	SH1T (2.07kg)	SH2T (2.23kg)
Built-in protection cage & Terminal box	SH1TP (2.32kg)	SH2TP (2.52kg)

※ Product weight is based on AC type.

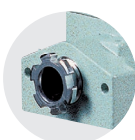
Ordering Specification

SH1T	220	R	SUS
[Model number]	[Voltage]	[Color]	[Housing materials]
SH1 / SH1P	12-DC12V 24-DC24V 110-AC110V 220-AC220V	R-Red A-Amber G-Green B-Blue	None - AI SUS - STS316L
SH1T / SH1TP SH2 / SH2P SH2T / SH2TP			

SH1/SH2 models are equipped with flexible connector, and SH1T/SH2T models are equipped with 15C nipple at cable entry.



Flexible connector



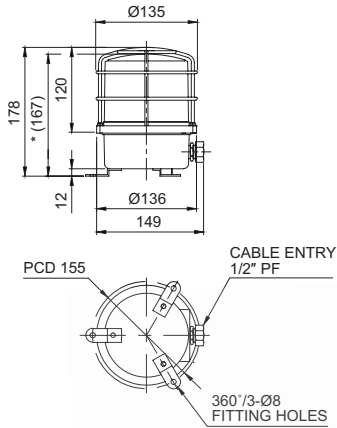
15C nipple

SH1 / SH2 Series

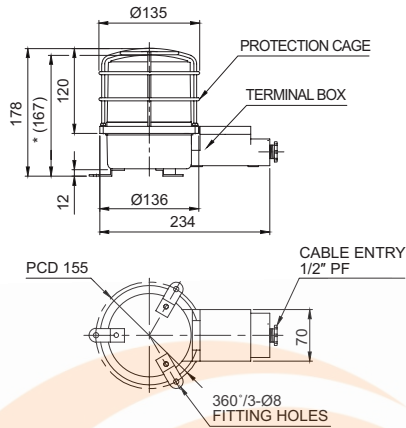
Technical Diagram

Units: mm

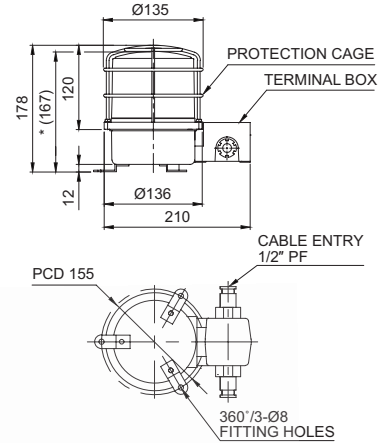
·SH1LRP(-SUS) / SH1LP(-SUS) / SH1SP(-SUS) / SH1P(-SUS)



·SH1TLRP / SH1TLP / SH1TSP / SH1TP

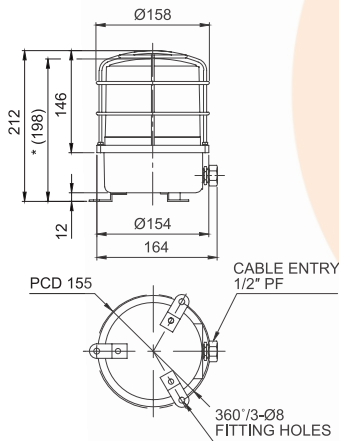


·SH1LR-2TP / SH1L-2TP / SH1S-2TP / SH1-2TP (Cable entry 2EA type)

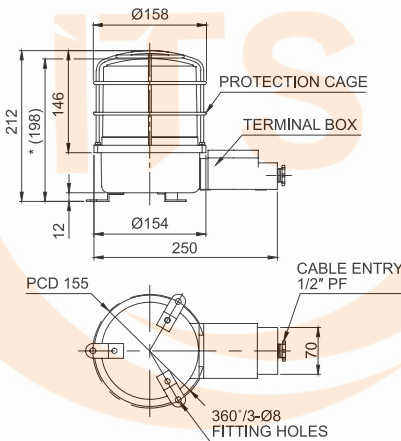


※ *(167) represents SH1LR(-SUS)/ SH1L(-SUS)/SH1S(-SUS)/ SH1(-SUS), SH1TLR/ SH1TL/ SH1TS/ SH1T size without protection cage.

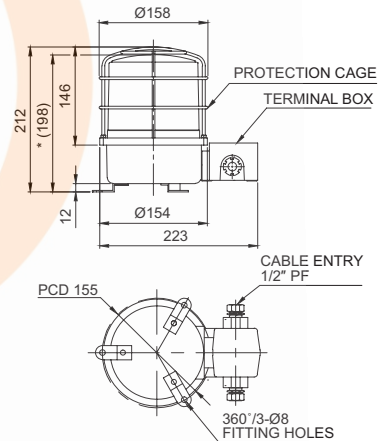
·SH2LRP / SH2LP / SH2SP / SH2P



·SH2TLRP / SH2TLP / SH2TSP / SH2TP



·SH2LR-2TP / SH2L-2TP / SH2S-2TP / SH2-2TP (Cable entry 2EA type)



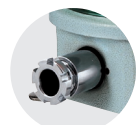
※ *(198) represents SH2 Series size without protection cage.

Wiring Instructions

· SH1(-SUS), SH1LR(-SUS), SH2, SH2LR : Black output line is negative(-).

Customization

- 3/4" PF Cable entry
Standard cable entry is 1/2" PF, 3/4" PF is customization
- Built-in cable gland type
Flexible connector is equipped to the standard cable entry
- Brass housing product
Color will be MUNSELL No. 7.5BG 7/2 when released.
- 2T type has 2 cable entries in the terminal box
2 cable entries terminal box is a customized add-on.



Built-in cable gland



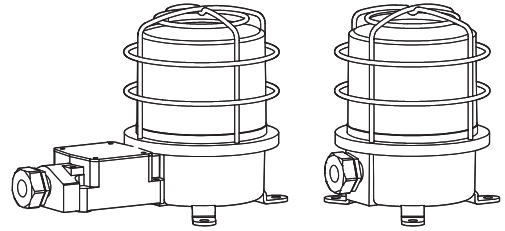
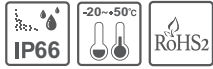
Brass housing product



2 cable entries terminal box model

Heavy-Duty Bulb Revolving Warning Lights for Vessels and Heavy Industry Applications

SH1/ SH2



Thank you for purchasing Qlight's products. Please read this user manual carefully prior to installation and operation to ensure safe and correct use.

⚠ Precautions for Safety

Failure to follow the instructions below may cause a loss of life or serious physical injury.

1. During wiring or maintenance, please completely turn off the power of the product. (Failure to follow this may lead to an electric shock.)
2. Do not install the product in locations that subjects it to excessive dust or water other than the conditions designated by the IP protection ratings indicated for each product. (Failure to follow these instructions may cause a fire to the product, electric shock, physical injury, malfunction or damage to the product.)
3. Do not alter or repair this product. If maintenance or repair service is required, please contact your local Qlight contact point. (Failure to follow these instructions may lead to fire, electric shock, or product damage.)
4. Please apply the correct voltage to the product. (Failure to follow these instructions may lead to fire, electric shock, or product damage.)
5. When the product is applied to a condition that may impact lives or property, please make sure to have a double safety device. (Failure to follow this may cause damage to property, fire, electric shock and loss of life.)

⚠ Precautions for Correct Use

Failure to follow the proper instructions may cause damage to property, the product, or malfunction of the product that would void the warranty.

1. Please remove any objects that can interrupt ventilation around the product.
2. Please turn off the power of the product immediately if it fails to operate properly.
3. Carefully wire the product according to each product's specification.
4. Please be careful in preventing chemicals such as thinner, benzene, etc. in contact with the surface of the product.
5. Do not apply excessive force/impact to the product.
6. Failure to follow any of the instructions above may cause malfunction or damage to the product, fire, and electric shock.

Ordering Specifications

SH1T	220	R
[Model number]	[Voltage]	[Color]
• SH1	• 12 - DC12V	R-Red
• SH1P	• 24 - DC24V	A-Amber
• SH1T	• 110 - AC110V	G-Green
• SH1TP	• 220 - AC220V	B-Blue
• SH2		
• SH2P		
• SH2T		
• SH2TP		

Product Specifications

Model number		Voltage	Current	Bulb specifications			Certificates	Color
				Volts/ Watts	Configuration	Part#		
• SH1	Standard type	DC12V	1.545A	12V15W	G23 15S	17	<div>CE</div> <div>CCS</div>	R-Red A-Amber G-Green B-Blue
• SH1P	Protection cage type	DC24V	0.766A	24V15W	G23 15S	18		
• SH1T	Terminal box type	AC110V	0.204A	12V15W	G23 15S	17		
• SH1TP	Protection cage and terminal box type	AC220V	0.102A	12V15W	G23 15S	17		
• SH2	Standard type	DC12V	1.545A	12V15W	G23 15S	17	<div>CE</div>	
• SH2P	Protection cage type	DC24V	0.766A	24V15W	G23 15S	18		
• SH2T	Terminal box type	AC110V	0.204A	12V15W	G23 15S	17		
• SH2TP	Protection cage and terminal box type	AC220V	0.102A	12V15W	G23 15S	17		

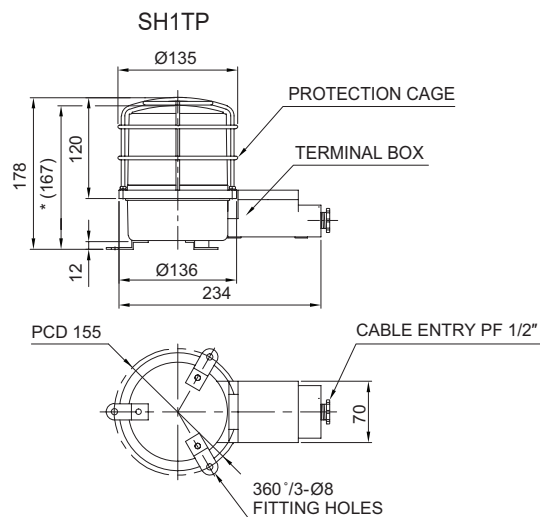
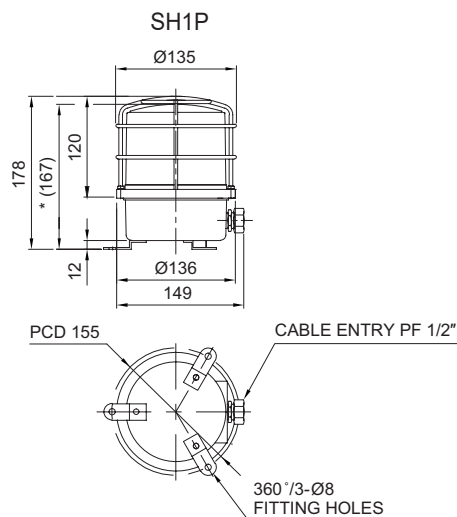
※ CE compliant : DC24V

- Protection rating : IP66
- Ambient operating temperature : -20°C to +50°C

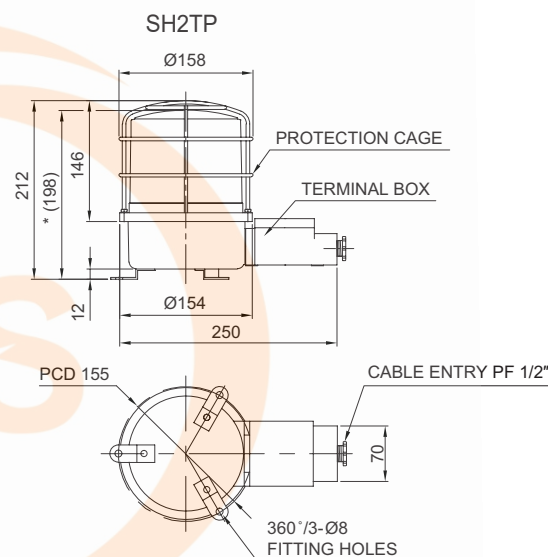
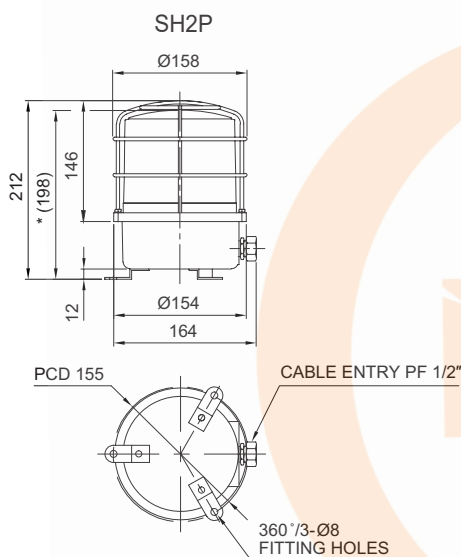


Please scan the QR code for more detailed product information.

www.qlight.com

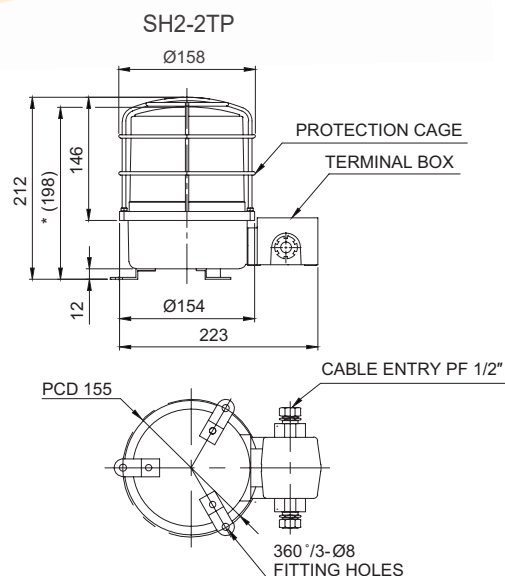
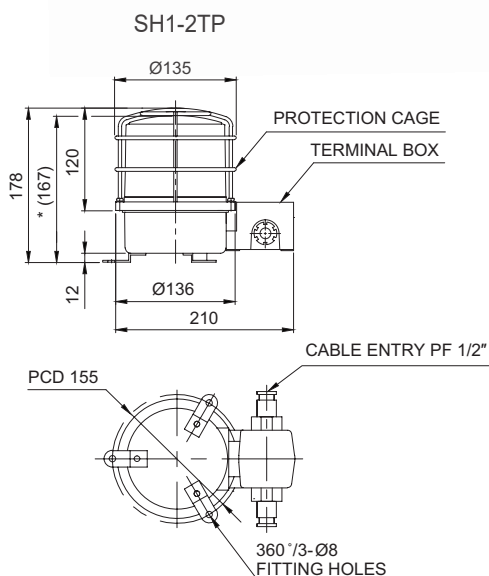


※ *(167)size without protection cage.



※ *(198)size without protection cage.

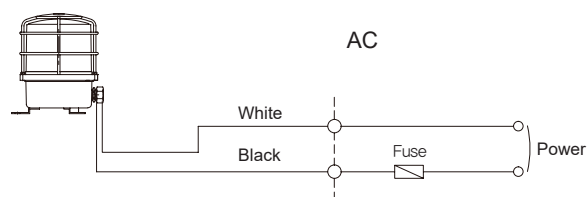
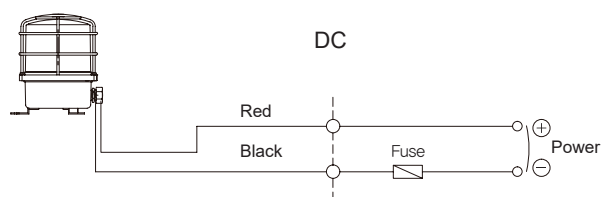
■ Dimensions for 2T type has 2 cable entries



※ *(167)size without protection cage.

※ *(198)size without protection cage.

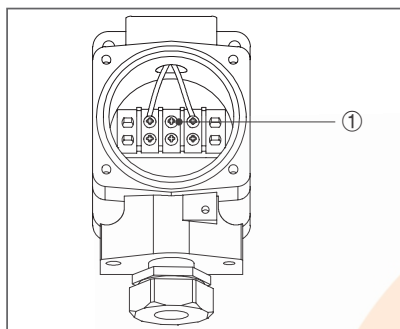
Wiring Instructions



- External power line - UL1015 AWG18(0.75sq) × 2C 400mm

Terminal Box Wiring Instructions

- SH1T/ SH1TP/ SH2T/ SH2TP

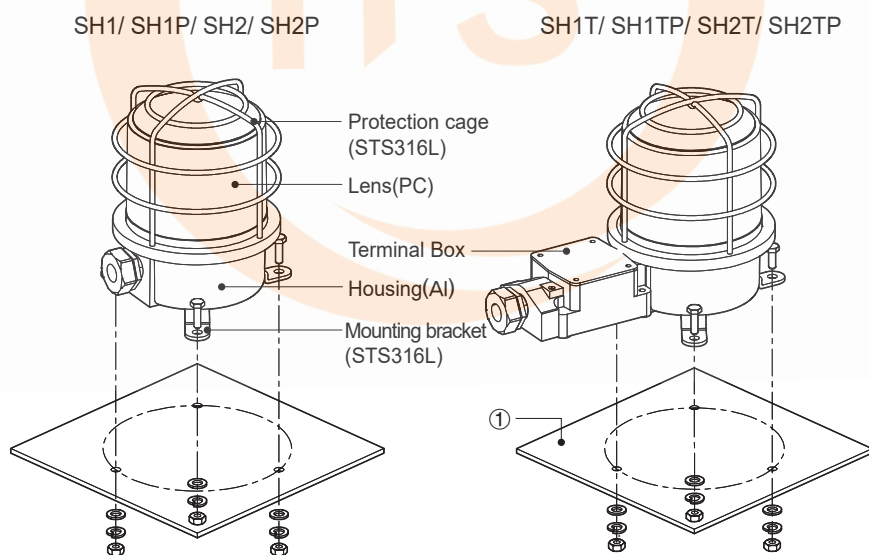


- Terminal block is located inside of the product. Unscrew the 4 bolts located in the upper body to get rid of the upper lighting element of the unit.
- Please apply fork (U-type) or ring (O-type) locking spade terminal at naked tip of the wire for secure connection.
- Please wire the power line to terminal ①

※ Applicable cable range : AWG16-AWG22

Parts Definition/ Installation

■ Parts Definition

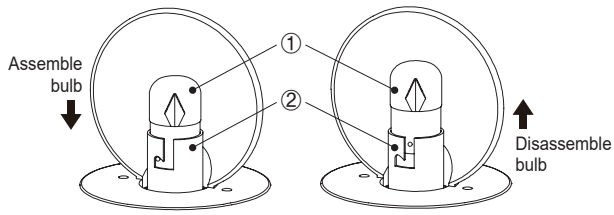


■ Installation

- First, machine holes on the mounting surface①
- The mounting hole of this product is 8mm in diameter.
- When machining taps, fasten the bolt through the mounting hole of the bracket.
- When machining holes, insert the bolt through the hole of the product, and tighten the nut from the opposite side of the mounting surface.

Light bulb Replacement Instructions/ Mounting Hole Specifications

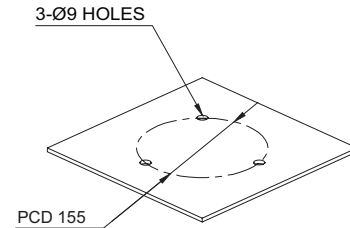
■ Bulb Replacement Instructions(SJD only)



- Please wait at least 1 minute after turning off the power before replacing the bulb.
- In order to disassemble the bulb, please push down the bulb(①) lightly and screw it counterclockwise.
- In order to put the bulb in to the unit, please place the bulb(①) in the socket(②) and screw it clockwise while lightly pushing down the bulb.

■ Mounting Hole Specifications

- Machine holes on the mounting surface referring to the diagram below.



Installation Environment and Protection Rating

- This product is designed for use with protection rating of IP66.
- If the product is installed in locations that subject it to excessive dust or water other than the designated IP protection rating indicated(IP66), it may cause malfunction or damage to the product.
- For further information, please visit our website (www.qlight.com).

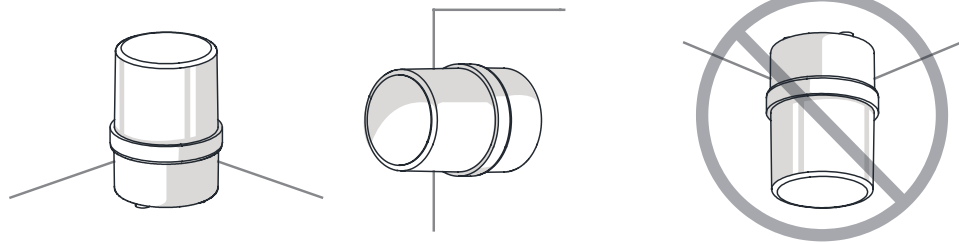
Product installation direction

- Install the product in accordance with the manual. Otherwise rainwater or moisture may penetrate into the product.

· BEACON/SIGNALING LIGHT

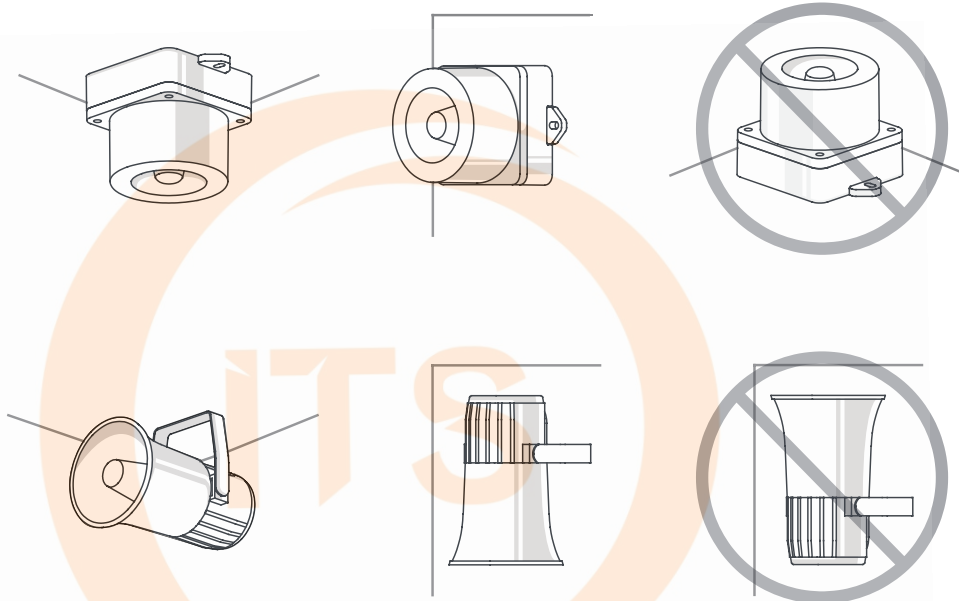
※ For products with a protection rating of less than IPX4, please install it vertically.

Power cord inlet part shall not be facing the sky.



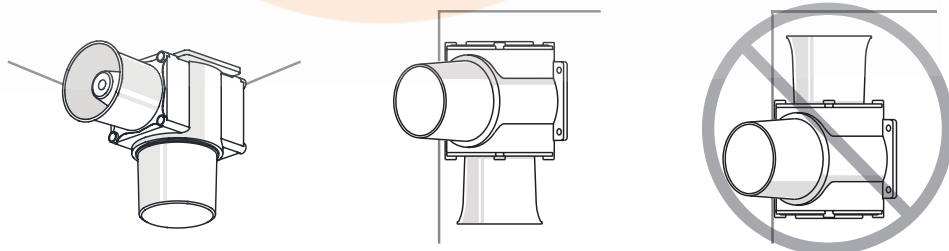
· ELECTRONIC SOUNDER/SIGNAL HORN

Sounder part shall not be facing the sky.



· HEAVY-DUTY & EXPLOSION PROOF SIGNALINGS

Sounder part shall not be facing the sky.



· SIGNAL TOWER LIGHTS

※ For products with a protection rating of less than IPX4, please install it vertically.

Power cord inlet part shall not be facing the sky.

