



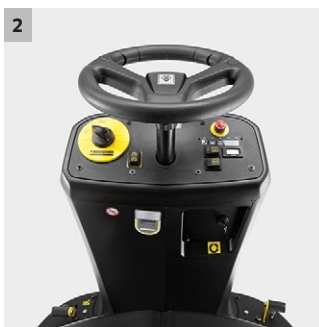
## KM 90/60 R Bp Advanced

Compact ride-on vacuum sweeper with unique Tact filter clean technology for constantly high dust control. With 1.2 kW 24V electric drive and choice of low maintenance or maintenance-free batteries.



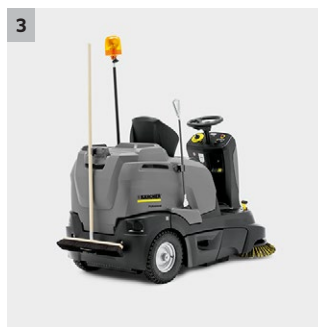
### 1 Tact: fully automatic, continuous filter cleaning

- Highly effective filter cleaning for continuous dust-free operation.
- Compact filter size with long service life.



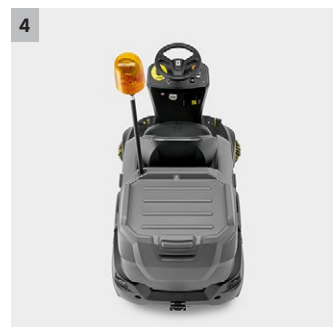
### 2 EASY-Operation concept

- Logical and clear.
- All controls are clearly arranged and easy to access.



### 3 Cleaning tool kit base for greater flexibility

- Different practical connections for other accessories.
- Easy to carry, for example, a litter picker, brush or an additional container.



### 4 Robust, compact design with pick-up area

- Built to last, highly reliable.
- Safety and manoeuvrability



**KM 90/60 R Bp Advanced**

■ Retractable side brush

## Technical data

<b>Order no.</b>		1.047-302.0
<b>EAN code</b>		4039784621350
		DC motor
<b>Drive - power</b>	<b>kW</b>	1,2
<b>Max. Area Performance</b>	<b>m²/h</b>	5400
	<b>m²/h</b>	6900
<b>Working width</b>	<b>mm</b>	615
<b>Working width with 1 side brush</b>	<b>mm</b>	900
<b>Working width with 2 side brushes</b>	<b>mm</b>	1150
<b>Battery runtime</b>	<b>h</b>	max. 2,5
<b>Waste Container</b>	<b>l</b>	60
<b>Hill climbing ability</b>	<b>%</b>	12
<b>Operating speed</b>	<b>km/h</b>	6
<b>Weight</b>	<b>kg</b>	355
<b>Dimensions (L × W × H)</b>	<b>mm</b>	1695 × 1060 × 1260

## Equipment

Automatic filter cleaning	■	State-of-charge indicator	■
Floating main roller brush	■	Operating hour meter	■
Adjustable suction power	■	Sweep function (can be switched off)	■
Bulk waste flap	■	Side brush pneumatically controlled	■
Battery and built-in charger included	■		
Overthrow sweeping principle	■		
Travel drive - forward	■		
Travel drive, reverse	■		
Vacuum	■		
Outdoor applications	■		
Indoor applications	■		

■ Included in delivery.

# KM 90/60 R BP ADVANCED

## 1.047-302.0



		Order no.	Quantity	Battery volta- ge	Battery capaci- ty	Battery type	Price	Description	
Traction batteries									
Battery	1	6.654-124.0		6 V	180 Ah	mainte- nance- free			■

■ Included in delivery.    □ Available accessories.

# KM 90/60 R BP ADVANCED

## 1.047-302.0



		Order no.	Installation ex-works	Battery voltage	Battery capacity	Battery type	Price	Description	
Chargers									
Charger	1	4.839-389.0		24 V		built-in		For charging battery 6.654-124.0.	■

■ Included in delivery.    □ Available accessories.

# KM 90/60 R BP ADVANCED

## 1.047-302.0

**KÄRCHER**



		Order no.	Installation ex works	Length / width	Diame- ter	Price	Description	
<b>Standard main roller brushes</b>								
Reversing rolling mill complete KM 90 /6	1	4.762-430.0		615 mm	250 mm		Moisture-proof universal bristles, longlife, suitable for all surfaces	■
<b>Flat pleated filter</b>								
Flat filter with cross beam PES	2	6.907-519.0					Synthetic filter, moisture-proof, washable, saves maintenance costs	■
<b>Main roller brush - Soft/natural</b>								
Reversing rolling mill complete soft KM	3	4.762-442.0		615 mm	250 mm		Specially designed with natural bristles for sweeping fine dust on smooth floors indoors	□
<b>Main roller brush, hard</b>								
Reversing rolling mill complete hard KM	4	4.762-443.0		615 mm	250 mm		For the removal of stubborn dirt outdoors	□
<b>Main roller brush, antistatic</b>								
Main roller brush, antistatic	5	4.762-441.0		615 mm	250 mm		For sweeping surfaces subject to static build up (e.g. carpets, artificial turf)	□
Main sweeper roller, artificial turf	6	6.907-342.0		615 mm	190 mm		Required for sweeping artificial turf, antistatic, only useful with integrated artificial turf sweeping kit 2.851-320.7.	□
<b>Filter conversion kit</b>								
Dual Tact filter cleaning system	7	2.643-176.0	2.851-392.7				For sweeping on particularly dusty ground.	□
	8	2.851-392.7	2.851-392.7					□

■ Included in delivery. □ Available accessories.

# KM 90/60 R BP ADVANCED

## 1.047-302.0



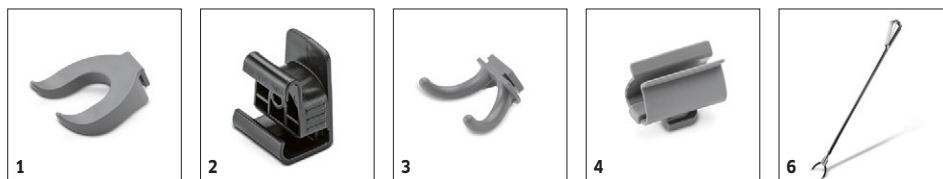
		Order no.	Installation ex works	Length / width	Diame- ter	Price	Description	
<b>Standard side brushes</b>								
Side broom standard	1	6.906-132.0			420 mm		Moisture-proof universal bristles, longlife, suitable for all surfaces	■
<b>Side brush, hard</b>								
Side broom hard	2	6.905-625.0			420 mm		Removes stubborn dirt outdoors, moisture-proof, mildly abrasive	□
<b>Side brush, soft</b>								
Side broom soft	3	6.905-626.0			420 mm		Moisture-proof, soft side brush for sweeping fine dust on all surfaces indoors and outdoors. Ideal for dirt with a high dust content.	□

■ Included in delivery. □ Available accessories.

# KM 90/60 R BP ADVANCED

## 1.047-302.0

**KÄRCHER**



		Order no.	Length	Colour	Quantity	Price	Description	
<b>Cleaning tool kit accessories</b>								
Bottle holder	1	6.980-080.0		grey	1 Piece(s)		Suitable for transporting spray bottles - only in conjunction with Home Base adapter 5.035-488.0.	<input type="checkbox"/>
Adapter Homebase	2	5.035-488.0			1 Piece(s)		Fastener for various hooks and clips on the machine.	<input type="checkbox"/>
Double hook	3	6.980-077.0			1 Piece(s)		Double hook for attaching rubbish bags, etc. to the machine. Only for use with the Homebase adapter 5.035-488.0.	<input type="checkbox"/>
Holder handhold grey	4	6.980-078.0		grey	1 Piece(s)		Mop clip for attaching a mop to the machine. Only for use with the Homebase adapter 5.035-488.0.	<input type="checkbox"/>
Home Base brush holder kit	5	4.035-523.0					Holder fits on machine for convenient brush storage.	<input type="checkbox"/>
Home Base litter picker kit	6	4.035-524.0					Litter picker including fastener on the machine.	<input type="checkbox"/>

■ Included in delivery.    □ Available accessories.

# KM 90/60 R BP ADVANCED

## 1.047-302.0



		Order no.	Quantity	ID	Width	Length	Price	Description	
Other									
Cleaning agent container, complete	1	4.070-006.0	1 Piece(s)					Kit consisting of cleaning agent container and Home Base adapter. For connecting Home Base rail.	<input type="checkbox"/>

■ Included in delivery.    ☐ Available accessories.



# KM 90/60 R BP ADVANCED

## 1.047-302.0



		Order no.	Installation ex works				Price	Description	
<b>Sweeping/Vacuuming</b>									
Carpet sweeping kit	1	2.851-334.7	2.851-334.7					Carpet sweeping kit including antistatic roller brush for cleaning carpet surfaces.	<input type="checkbox"/>
<b>Warning beacon</b>									
Add-on kit revolving signal light LED KM	2	2.643-887.0	2.643-887.7						<input type="checkbox"/>
<b>Side brushes, left</b>									
Add-on kit side broom left KM 90/60 R	3	2.642-693.0	2.642-693.7					Side brush, complete, including standard side brush for increasing area performance.	<input type="checkbox"/>

■ Included in delivery.    ☐ Available accessories.

**KM 90/60 R BP ADVANCED**  
**1.047-302.0**



		Order no.	Installation ex works				Price	Description	
<b>Tyres, puncture-proof</b>									
Puncture-proof tyres (set), solid rubber, non-marking	1	2.641-129.7	2.641-129.7					Avoid tyre marks on light surfaces	<input type="checkbox"/>

■ Included in delivery.    □ Available accessories.

KM 90/60 R Bp Advanced, 1.047-302.0, 2022-06-07