

MEDIUM LOCAL INTERFACE MODULE M-LIM

Description

The local interface panel, M-LIM, is a monitoring local unit, part of SEDNI's DIAMAR® Automation System.

The M-LIM can be connected to the local adquisition units (LOM) and work as a remote station where all monitoring and control functions are available for the operator.

This module is provided with 3 CAN-BUS lines (triple redundancy) to ensure a safer and more reliable communication.

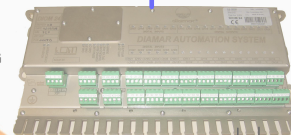
The panel is designed to access in a comfortable and intuitive way to machinery information.

M-LIM is prepared to work in the hardest environmental conditions, complying with the rules of the main Class Societies as: DNV, BV, GL, LR, ABS, RINA...



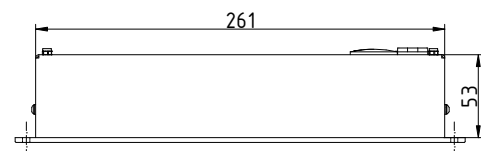
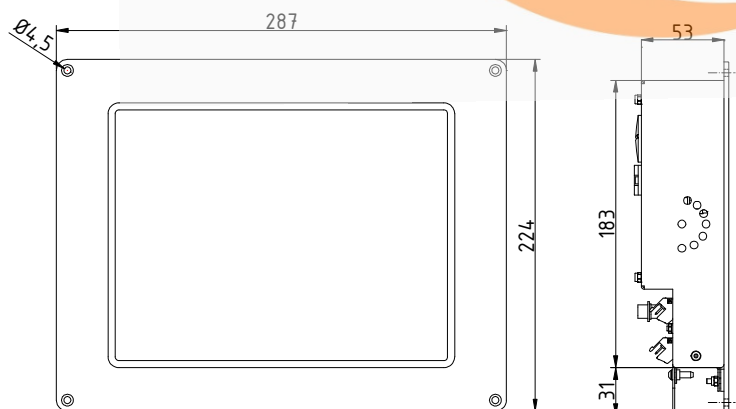
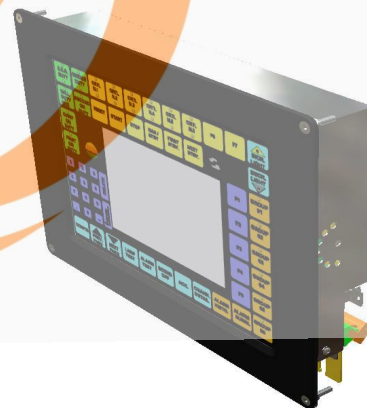
CAN BUS

LOCAL
OPERATING
MODULE

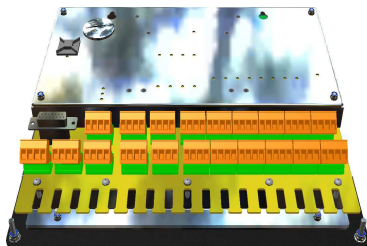
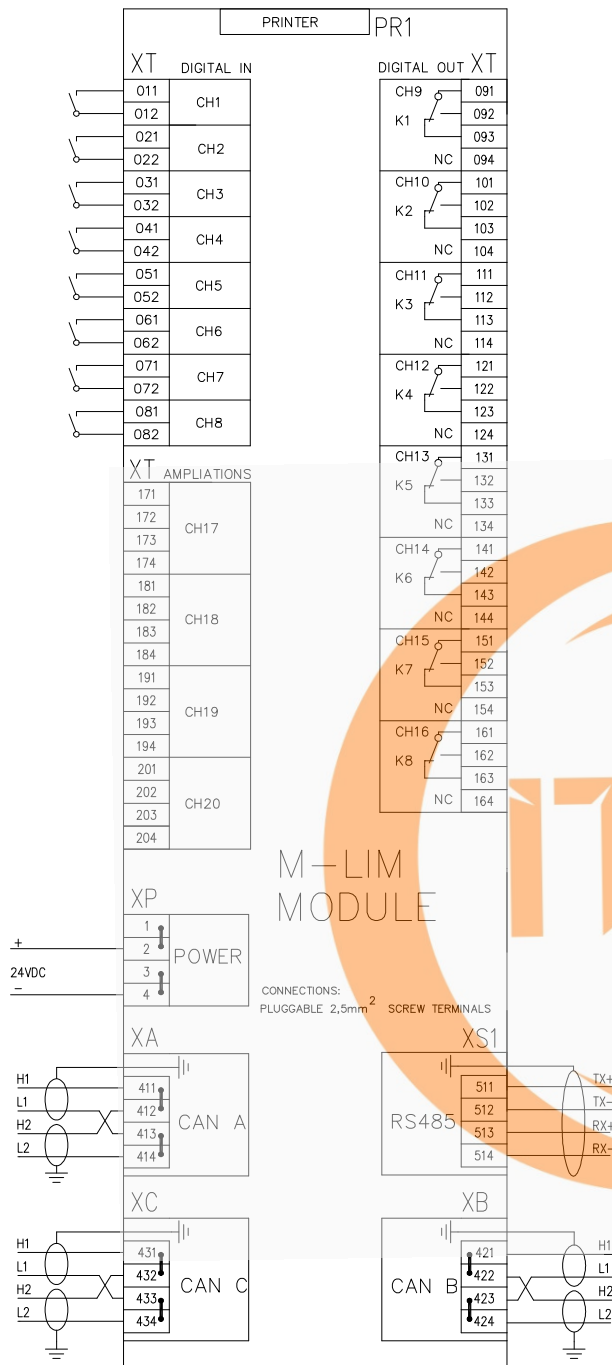


DIGITAL OUT
COMMAND

DIGITAL IN
FEEDBACK



Connection Drawing



Specification

- ✓ 8 digital inputs.
- ✓ 8 digital outputs.
- ✓ Alarm printer connection.
- ✓ Operational touch screen.
- ✓ Retroilluminated dedicated keyboard.
- ✓ Retroilluminated data LCD screen.
- ✓ Integrated sensor for temperature monitoring in PCB.
- ✓ Voltage monitoring in microprocessor.
- ✓ Suitable for direct mounting in engine room units (in cabin or console). Possibility to be mounted on engines, etc... (4G).
- ✓ Prepared to be installed directly in the Main Switch Board and starters.
- ✓ Galvanic Isolation between power, process and inputs/outputs.
- ✓ Power supply: 18 – 36 VDC
- ✓ Max. Power consumption: 8 W
- ✓ Working temperature: +5°C/+70°C
- ✓ Storage temperature: -20°C/+80°C
- ✓ Relative Humidity: 95%
- ✓ 3 CAN BUS lines.
- ✓ 2 RS422/485 serial lines.
- ✓ Easy assembly with screws (built-in assembly) or with arm holder (standard VESA).
- ✓ Size: 287 x 224 x 55 mm
- ✓ Weight: 2,60 Kg.