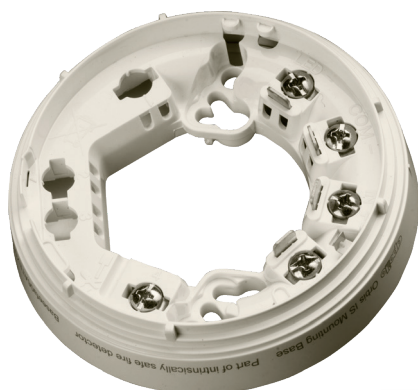


Orbis I.S.

TimeSaver® Base



Product overview

Product	I.S TimeSaver Base
Part No.	ORB-MB-50018-APO

Approvals



Product information

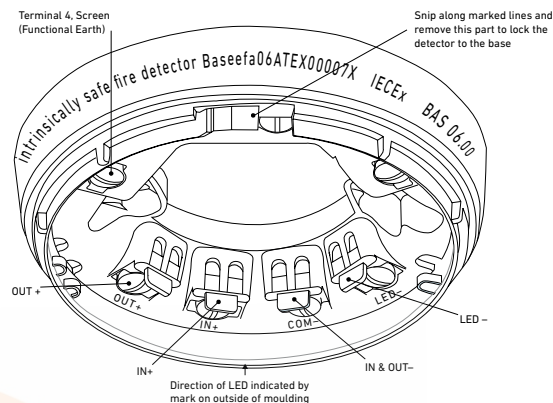
The Orbis Intrinsically Safe (I.S.) TimeSaver Base has been designed to make installation fast and simple.

The terminal screws are captive screws and will not fall out of the terminals. The base is supplied with the screws unscrewed in order to avoid unnecessary work for the installer.

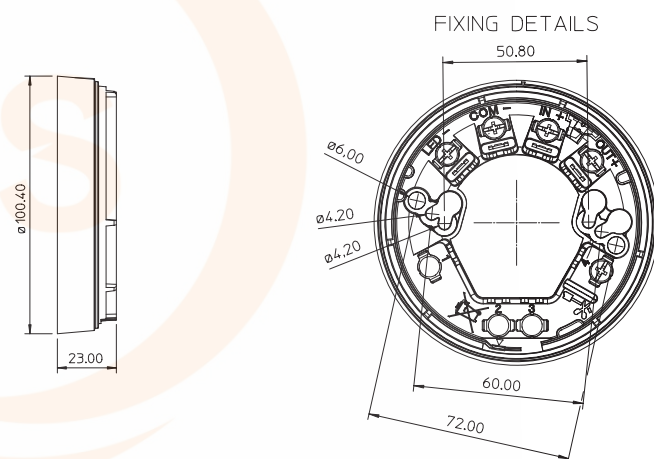
If it is required that all detectors are fitted with their LEDs facing the same direction, the bases must be fitted to the ceiling observing the marking on the exterior which indicates the position of the LED.

- Grouped terminals to make wiring easy
- Multiple fixing centres
- LED alignment mark
- Cable stripping guide

Orbis I.S. TimeSaver base terminals



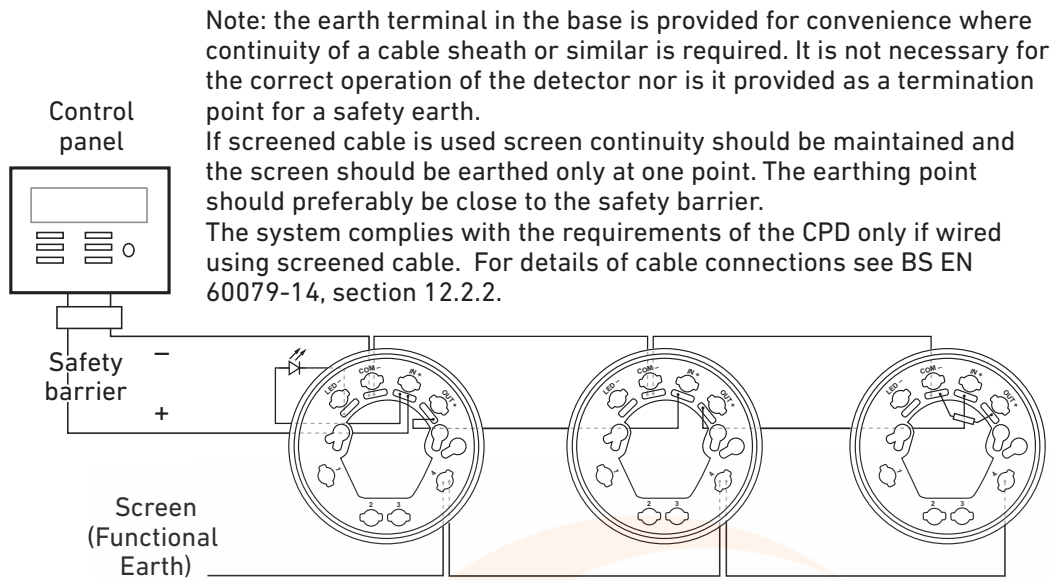
Orbis I.S. TimeSaver base dimensions



Marine Equipment Directive 2014/90/EU

The Orbis I.S. TimeSaver Base complies with the essential requirements of the Marine Equipment Directive 2014/90/EU.

Orbis I.S. TimeSaver Base wiring diagram



Orbis I.S. TimeSaver Base wiring diagram - three bases wired with a common LED

