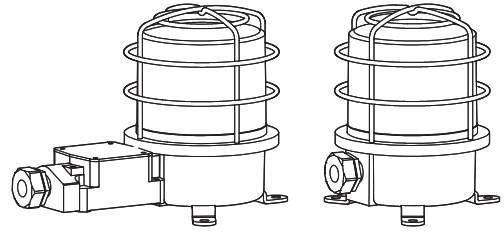
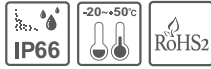


Heavy-Duty Bulb Revolving Warning Lights for Vessels and Heavy Industry Applications

SH1/ SH2



Thank you for purchasing Qlight's products. Please read this user manual carefully prior to installation and operation to ensure safe and correct use.

⚠ Precautions for Safety

Failure to follow the instructions below may cause a loss of life or serious physical injury.

1. During wiring or maintenance, please completely turn off the power of the product. (Failure to follow this may lead to an electric shock.)
2. Do not install the product in locations that subjects it to excessive dust or water other than the conditions designated by the IP protection ratings indicated for each product. (Failure to follow these instructions may cause a fire to the product, electric shock, physical injury, malfunction or damage to the product.)
3. Do not alter or repair this product. If maintenance or repair service is required, please contact your local Qlight contact point. (Failure to follow these instructions may lead to fire, electric shock, or product damage.)
4. Please apply the correct voltage to the product. (Failure to follow these instructions may lead to fire, electric shock, or product damage.)
5. When the product is applied to a condition that may impact lives or property, please make sure to have a double safety device. (Failure to follow this may cause damage to property, fire, electric shock and loss of life.)

⚠ Precautions for Correct Use

Failure to follow the proper instructions may cause damage to property, the product, or malfunction of the product that would void the warranty.

1. Please remove any objects that can interrupt ventilation around the product.
2. Please turn off the power of the product immediately if it fails to operate properly.
3. Carefully wire the product according to each product's specification.
4. Please be careful in preventing chemicals such as thinner, benzene, etc. in contact with the surface of the product.
5. Do not apply excessive force/impact to the product.
6. Failure to follow any of the instructions above may cause malfunction or damage to the product, fire, and electric shock.

Ordering Specifications

SH1T	220	R
[Model number]	[Voltage]	[Color]
• SH1	• 12 - DC12V	R-Red
• SH1P	• 24 - DC24V	A-Amber
• SH1T	• 110 - AC110V	G-Green
• SH1TP	• 220 - AC220V	B-Blue
• SH2		
• SH2P		
• SH2T		
• SH2TP		

Product Specifications

Model number		Voltage	Current	Bulb specifications			Certificates	Color
				Volts/ Watts	Configuration	Part#		
• SH1	Standard type	DC12V	1.545A	12V15W	G23 15S	17	CE CCS	R-Red A-Amber G-Green B-Blue
• SH1P	Protection cage type	DC24V	0.766A	24V15W	G23 15S	18		
• SH1T	Terminal box type	AC110V	0.204A	12V15W	G23 15S	17		
• SH1TP	Protection cage and terminal box type	AC220V	0.102A	12V15W	G23 15S	17		
• SH2	Standard type	DC12V	1.545A	12V15W	G23 15S	17	CE	
• SH2P	Protection cage type	DC24V	0.766A	24V15W	G23 15S	18		
• SH2T	Terminal box type	AC110V	0.204A	12V15W	G23 15S	17		
• SH2TP	Protection cage and terminal box type	AC220V	0.102A	12V15W	G23 15S	17		

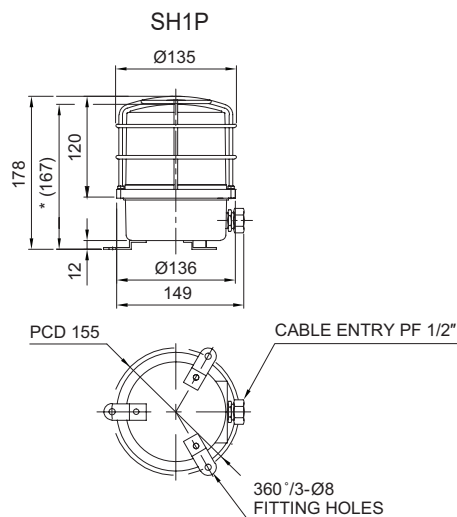
※ CE compliant : DC24V

- Protection rating : IP66
- Ambient operating temperature : -20°C to +50°C

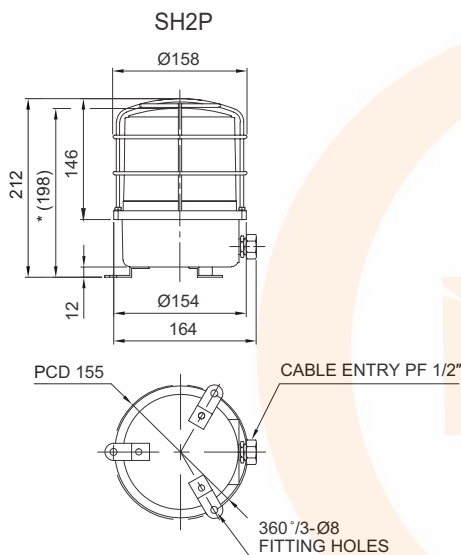
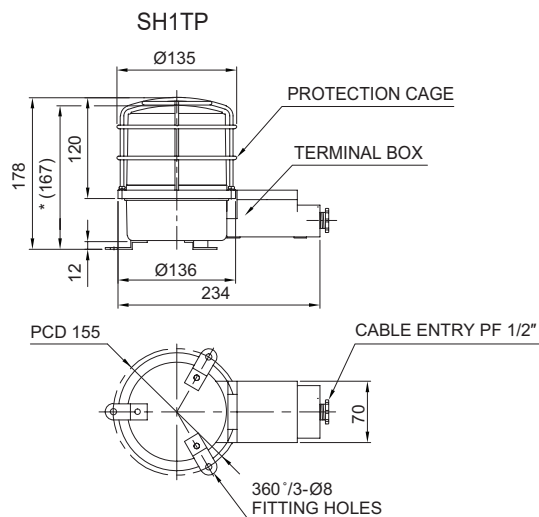


Please scan the QR code for more detailed product information.

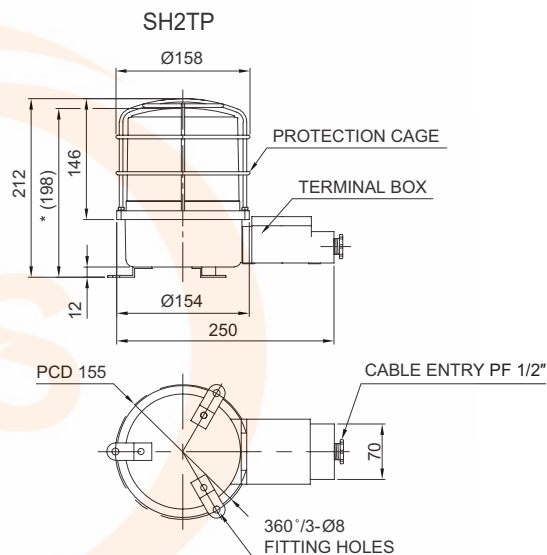
www.qlight.com



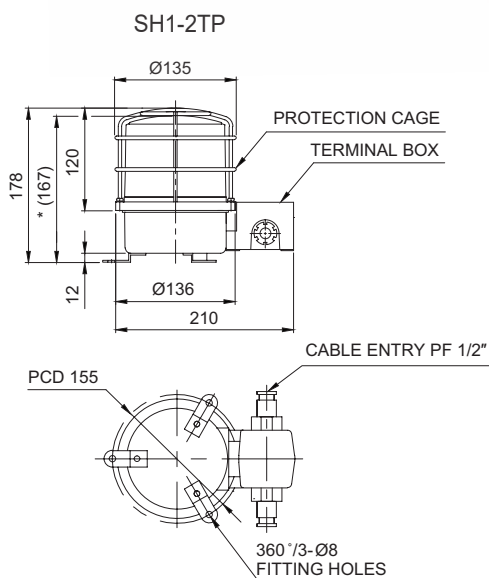
※ *(167)size without protection cage.



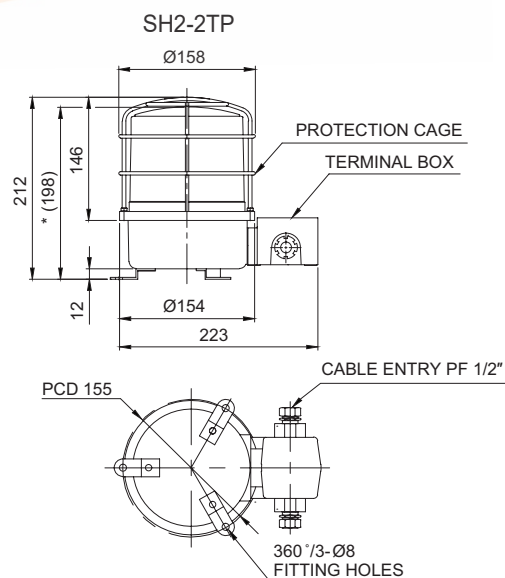
※ *(198)size without protection cage.



■ Dimensions for 2T type has 2 cable entries

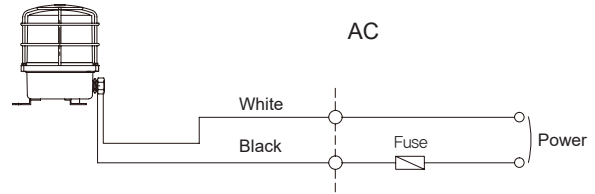
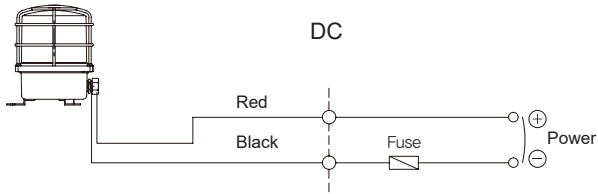


※ *(167)size without protection cage.



※ *(198)size without protection cage.

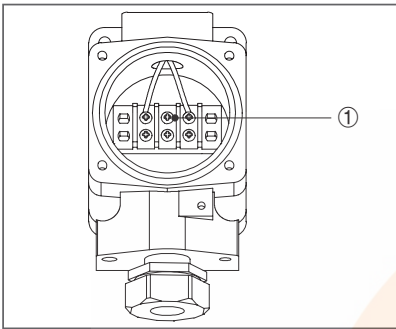
Wiring Instructions



- External power line - UL1015 AWG18(0.75sq) × 2C 400mm

Terminal Box Wiring Instructions

- SH1T/ SH1TP/ SH2T/ SH2TP

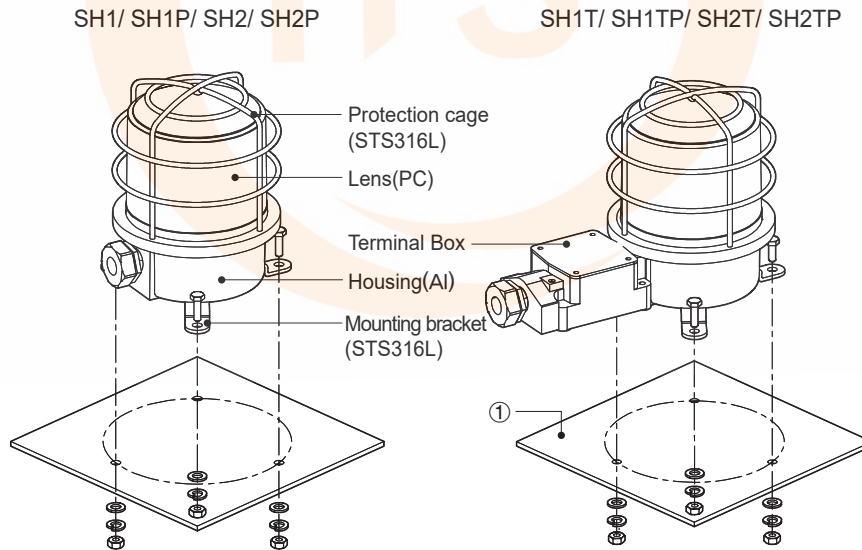


- Terminal block is located inside of the product. Unscrew the 4 bolts located in the upper body to get rid of the upper lighting element of the unit.
- Please apply fork (U-type) or ring (O-type) locking spade terminal at naked tip of the wire for secure connection.
- Please wire the power line to terminal ①

※ Applicable cable range : AWG16-AWG22

Parts Definition/ Installation

■ Parts Definition

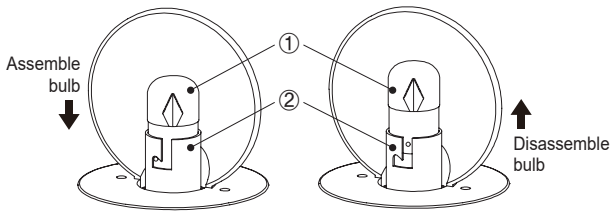


■ Installation

- First, machine holes on the mounting surface①
- The mounting hole of this product is 8mm in diameter.
- When machining taps, fasten the bolt through the mounting hole of the bracket.
- When machining holes, insert the bolt through the hole of the product, and tighten the nut from the opposite side of the mounting surface.

Light bulb Replacement Instructions/ Mounting Hole Specifications

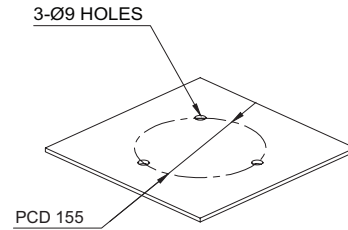
■ Bulb Replacement Instructions(SJD only)



- Please wait at least 1 minute after turning off the power before replacing the bulb.
- In order to disassemble the bulb, please push down the bulb(①) lightly and screw it counterclockwise.
- In order to put the bulb in to the unit, please place the bulb(①) in the socket(②) and screw it clockwise while lightly pushing down the bulb.

■ Mounting Hole Specifications

- Machine holes on the mounting surface referring to the diagram below.



Installation Environment and Protection Rating

- This product is designed for use with protection rating of IP66.
- If the product is installed in locations that subject it to excessive dust or water other than the designated IP protection rating indicated(IP66), it may cause malfunction or damage to the product.
- For further information, please visit our website (www.qlight.com).

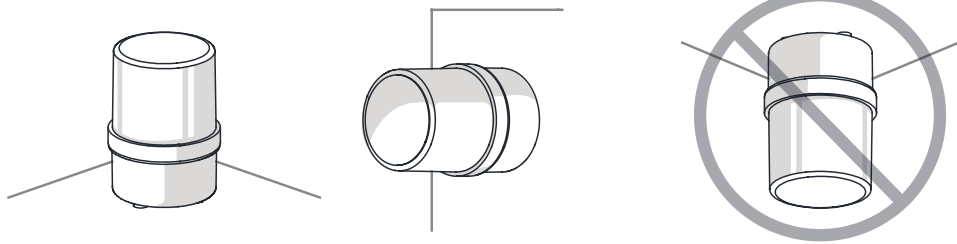
Product installation direction

- Install the product in accordance with the manual. Otherwise rainwater or moisture may penetrate into the product.

· BEACON/SIGNALING LIGHT

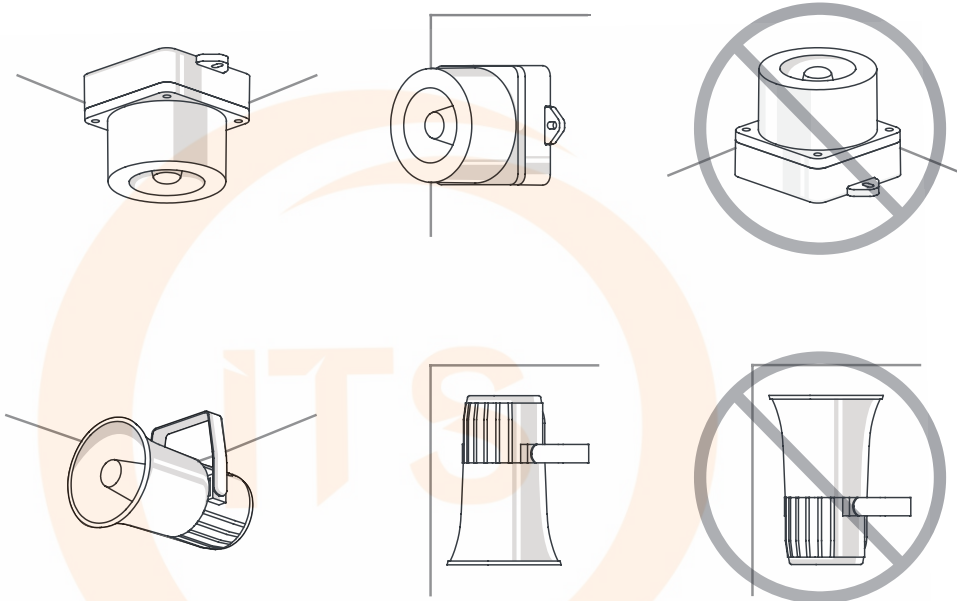
※ For products with a protection rating of less than IPX4, please install it vertically.

Power cord inlet part shall not be facing the sky.



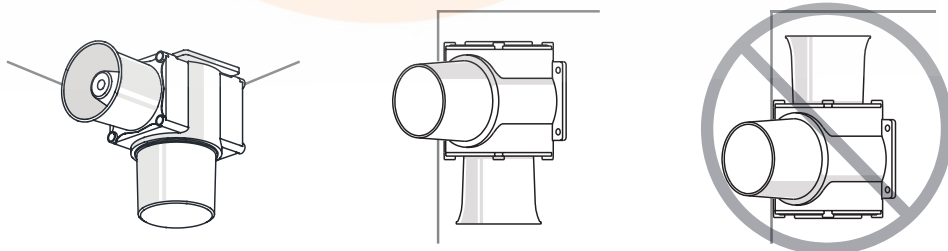
· ELECTRONIC SOUNDER/SIGNAL HORN

Sounder part shall not be facing the sky.



· HEAVY-DUTY & EXPLOSION PROOF SIGNALINGS

Sounder part shall not be facing the sky.



· SIGNAL TOWER LIGHTS

※ For products with a protection rating of less than IPX4, please install it vertically.

Power cord inlet part shall not be facing the sky.

