

# Wall Mount Electronic Sounder with Pre-Recorded Special Warning Sound

## QWH Series

Wall mount Electronic Sounder that offers 31 pre-recorded warning sounds and 31 user selected sound messages



- Bit input offers 5 channels with 6 sound outputs
- Binary input offers 31 sound outputs and SD Card (MP3) combination
- High volume type (buzzer type)

### PRODUCT SPECIFICATION

QWH35(SD) | QWH50(SD)  
QWH35T(SD) | QWH50T(SD)  
QWH35B | QWH35BT

**Materials** Horn-PC+ABS, Housing-PC+ABS

**Ambient operating temperature**

-30°C to +50°C(Standard type/buzzer type)

-50°C to +50°C(Low temperature type only DC)

-20°C to +50°C(SD Card type)

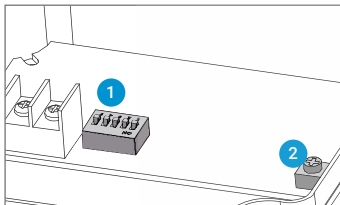
**Cable entry** PG 13.5

**Protection rating** IP66

**Compliant with RoHS directive**

- Signal fit for the specific environment and condition
- Options to select between 31 special warning sounds included in the pre-recorded sound type and SD Card(MP3) type
- Volume adjustment and sound selection switches located inside the unit. SD Card in the unit offers convenient operation.
- SD Card type allows the user to input the proper voice messages for specific operating conditions.
- Built-in special alarm type standard model and MP3(SDcard)
- Supports Binary Input Mode and Bit Input Mode for SD card
- \* Bit Input Mode can select and play 5 sounds from No. 1 to No. 5 on MP3 files of SDcard
- Tightly sealed structure that blocks water and dust with IP66 protection rating suitable for outdoor installation
- QWH35T, QWH35TSD, QWH50T, QWH50TSD allow for easy wiring with separate terminal box (Built-in terminal block for wiring inside product)
- High-volume buzzer output(QWH35B,QWH35BT)
- Support for CAN communication type products (Customization : QWH35, QWH35T)

### Pre-recorded sound type



- 1 Sound selection switch
- 2 Volume

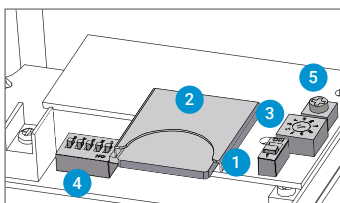
### Sound Selection and Volume Adjustment Instructions

QWH Series has control switches inside the unit for sound selection and volume adjustment. You can play customized sound message(MP3) with SD Card.

### QWH Series Product Category

QWH35(T)	Standard pre-recorded sound type
QWH35(T)SD	MP3(SD Card) type
QWH50(T)	Standard pre-recorded sound type, high volume output
QWH50(T)SD	MP3(SD Card) type, high volume output
QWH35B(T)	High volume type

### SD Card (MP3) type



- 1 Sound setting switch
- 2 MP3 playable SD Card slot
- 3 Play mode setting switch
- 4 Sound selection switch
- 5 Volume

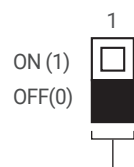
### The input method of built-in sound type

	1	2	3	4	5
ON	<input type="checkbox"/>	<input type="checkbox"/>	<input type="checkbox"/>	<input type="checkbox"/>	<input type="checkbox"/>
OFF	<input type="checkbox"/>	<input type="checkbox"/>	<input type="checkbox"/>	<input type="checkbox"/>	<input type="checkbox"/>
No.	1	2	3	4	5
0	0	0	0	0	0
1	0	0	0	0	1
2	0	0	0	1	0
:	:	:	:	:	:
31	1	1	1	1	1

Select from 31 pre-recorded output sound options by using a combination of the 5 channel input switches. Selecting one sound by combining 5 switches is binary input method The binary input method allows you to express each of the 31 alarm sound signals with a "0" or "1" by switching the 5 channels on and off as shown in the table.

### Sound selection instruction for SD Card type

- You can select between pre-recorded sound mode and SD Card sound (MP3) mode with the SOUND selection switch.

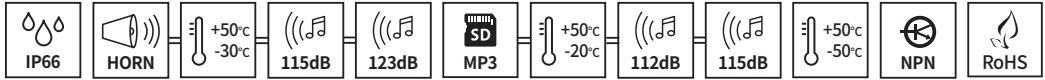


- 31 built-in alarm sounds and special sound
- Supports SD Cards for external sound (MP3)
- Binary Input: 31Ch
- Bit Input: 5Ch(SD Card only)
- Please refer to [Sound pattern and combination for special alarm product] on this catalogue for detailed settings.

Selection between pre-recorded sound mode and SD Card sound mode

0: pre-recorded sound mode

1: SD Card sound mode



### QWH35 Wall Mount Electronic Sounder with Pre-Recorded Special Warning Sound, Max.115dB

Model number	Voltage	Current	Sound pattern and volume	Certificates	Weight
QWH35 Built-in standard sound	DC12V-24V	Max.1.15A	·Bit Input: 5Ch (SD Card) ·Binary Input: 31Ch ·Warning sounds: Max. 115dB (Based on Ch31) ·MP3: Max.112dB	CE UL	0.9kg
	AC110V-220V	Max.300mA			
QWH35SD MP3	DC12V-24V	Max.1.15A			1.0kg
	AC110V-220V	Max.300mA			

※ UL Listed: DC12V-24V

### QWH50 Wall Mount Electronic Sounder with Pre-Recorded Special Warning Sound, Max.123dB

Model number	Voltage	Current	Sound pattern and volume	Certificates	Weight
QWH50 Built-in standard sound	DC12V-24V	Max.3.6A	·Bit Input: 5Ch (SD Card) ·Binary Input: 31Ch ·Warning sounds: Max.123dB (Based on Ch16) ·MP3: Max.115dB	CE UL	2.7kg
	AC110V-220V	Max.730mA			
QWH50SD MP3	DC12V-24V	Max.3.6A			2.8kg
	AC110V-220V	Max.730mA			

※ DC type model has a free-voltage range of 10V-30V.

※ AC type model has a free-voltage range of 100V-240V.

※ UL Listed: DC12V-24V

※ When playing MP3 files, there may be difference of volume depending on user's audio file type.



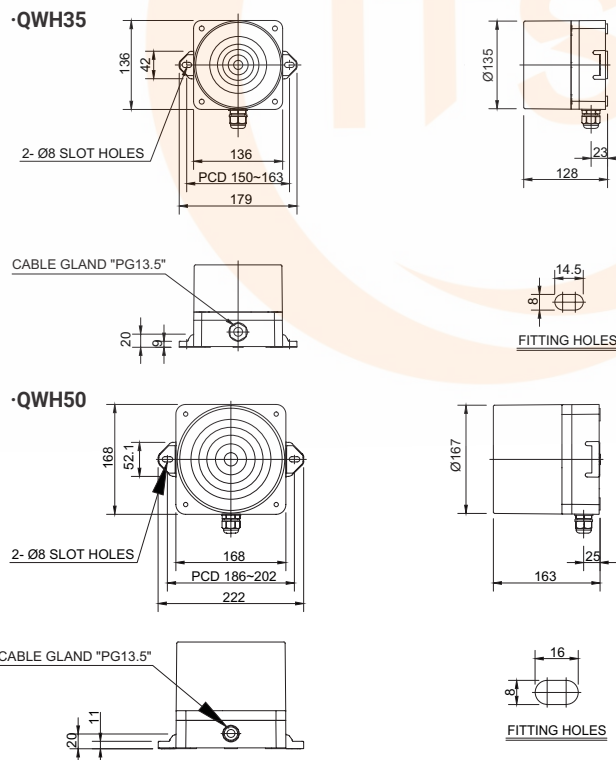
**QWH35 Series**  
(Max.115dB)



**QWH50 Series**  
(Max.123dB)

#### Technical Diagram

Units: mm



#### Wiring Instructions

QWH50	110/220	LC	INSD
[Model number]	[Voltage]	[sound selection]	[Including SD card]
QWH35 QWH35SD QWH50 QWH50SD	12/24-DC12V-24V 110/220-AC110V-220V	None-Standard type LC Type-Uses external contact	None-Without SD card INSD-Including SD card

#### Customization

- External threading of signal line for sound selection(Model number: -LC)
- Support for CAN communication type products(QWH35 DC only)
- Cold-resistance type(DC type only)

## QWH Series

Allows for easy wiring with terminal box and 2 cable gland equipped



**QWH35T Series**  
(Max.115dB)



**QWH50T Series**  
(Max.123dB)

### QWH35T Wall Mount Electronic Sounder with Pre-Recorded Special Warning Sound, Max.115dB

Model number	Voltage	Current	Sound pattern and volume	Certificates	Weight
QWH35T Built-in standard sound	DC12V-24V	Max.1.15A	·Bit Input: 5Ch (SD Card) ·Binary Input: 31Ch ·Warning sounds: Max.115dB (Based on Ch31) ·MP3: Max.112dB	CE UL	1.10kg 1.15kg
	AC110V-220V	Max.300mA			
QWH35TSD MP3	DC12V-24V	Max.1.15A			
	AC110V-220V	Max.300mA			

※ UL Listed: DC12V-24V

### QWH50T Wall Mount Electronic Sounder with Pre-Recorded Special Warning Sound, Max.123dB

Model number	Voltage	Current	Sound pattern and volume	Certificates	Weight
QWH50T Built-in standard sound	DC12V-24V	Max.3.6A	·Bit Input: 5Ch (SD Card) ·Binary Input: 31Ch ·Warning sounds: Max.123dB (Based on Ch16) ·MP3: Max.115dB	CE UL	3.00kg 3.10kg
	AC110V-220V	Max.730mA			
QWH50TSD MP3	DC12V-24V	Max.3.6A			
	AC110V-220V	Max.730mA			

※ DC type model has a free-voltage range of 10V-30V.

※ AC type model has a free-voltage range of 100V-240V.

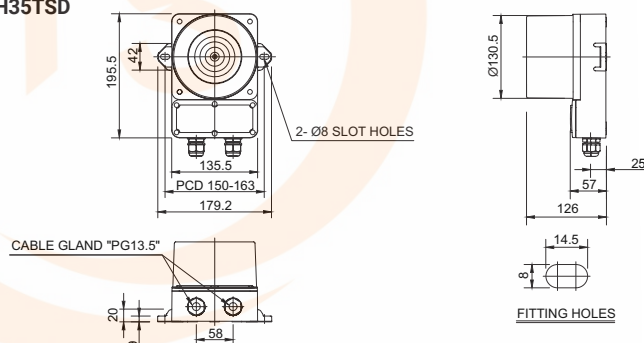
※ UL Listed: DC12V-24V

※ When playing MP3 files, there may be difference of volume depending on user's audio file type.

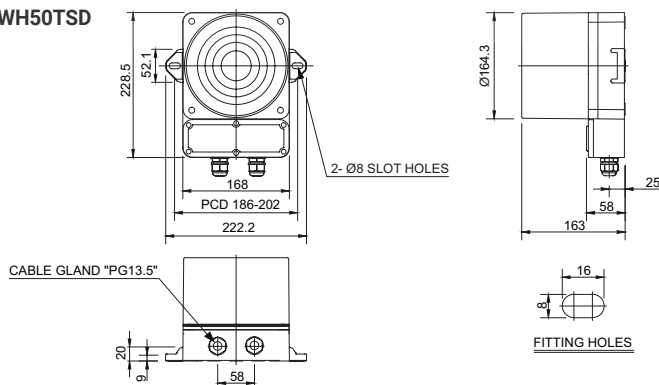
### Technical Diagram

Units: mm

#### ·QWH35T / QWH35TSD



#### ·QWH50T / QWH50TSD

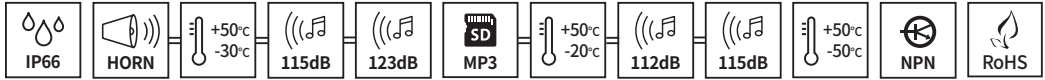


### Customization

- External threading of signal line for sound selection(Model number: -LC)
- Support for CAN communication type products(QWH35T DC only)
- Cold-resistance type(DC type only)

### Ordering Specification

QWCD35T	110/220	LC	INS
[Model number]	[Voltage]	[sound selection]	[Including SD card]
QWCD35T	12/24-DC12V-24V	None-Standard type	None-Without SD card
QWCD35TSD	110/220-AC110V-220V	LC Type-Uses external contact	INS-Including SD card
QWCD50T			
QWCD50TSD			

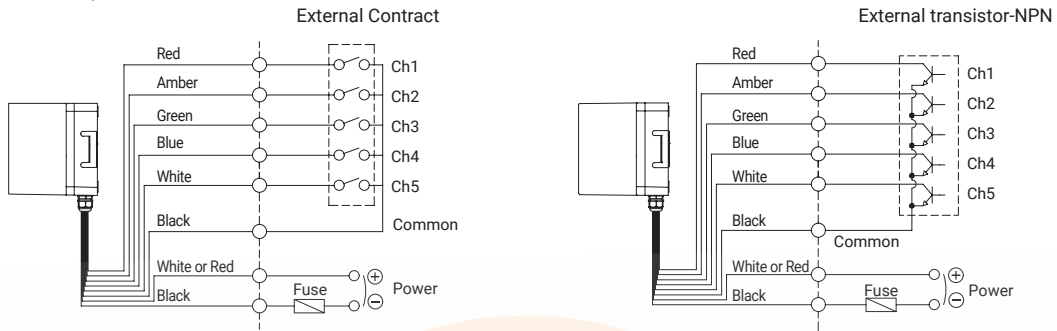


## Wiring Instructions

- Standard specification: Uses internal switches
- Customization: Uses External Contact

·QWH35 / QWH50-DC/AC

·QWH35T / QWH50T-DC/AC



- Channel selection, 5 sounds available with Bit input and 31 sound available with Binary input
- DC type : Black output line is negative(-)
- ※ Please refer to [Sound pattern and combination for multifunctional product] on this catalogue for channel input setting(Wiring instruction is replaced to channel selection switch).

ITS