

## Local, Caution Spotlight Fittings

### BSZD81-E Series Explosion-proof Caution Spotlight Fittings



- ◆ Explosion protection to
  - CENELEC
  - IEC
  - NEC
- ◆ Can be used in
  - Zone 1 and Zone 2
  - Zone 21 and Zone 22
  - Class I, Zone 1 and Zone 2
  - Class I, Division 2, Groups A, B, C, D
- ◆ Ultra-bright LED lamp, low consumption and long service life up to 50,000 hours, integrated chip control with various circuit protection.
- ◆ Synchronous flashing of light fittings through signal lines.
- ◆ Enclosure in copper-free aluminium, powder coated surface, yellow (RAL1021).

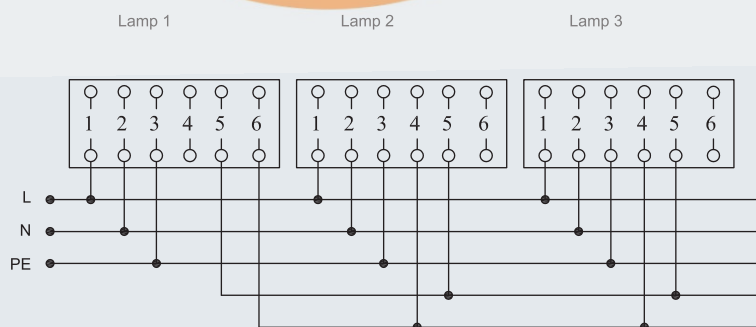
#### Catalogue number logic

BSZD81 - E □

T: Wireless synchronous (optional)  
 Lamp: LED (low luminous intensity)  
 Explosion-proof caution spotlight fittings



#### Wired sync connection diagram



## Zones 1&2; 21&22

## Local, Caution Spotlight Fittings

### BSZD81-E Series Explosion-proof Caution Spotlight Fittings

#### Technical data

#### Explosion-proof caution spotlight fittings BSZD81-E □

##### Explosion protection

Gas explosion protection

Dust explosion protection

##### Certificates

##### Conformity to standards

##### Material

Enclosure

Transparent cover

Exposed fastener

##### Rated voltage

##### Lamp

Lamp specification

Lamp power (W)

##### Lamp colour

##### Max. luminous intensity value

##### Flash frequency

##### Earthing protection

##### Degree of protection

##### Ambient temperature

##### Terminal

##### Cable entries

##### Cable gland (optional)

##### Weight

Ex II 2 G Ex de IIC T6 Gb

Ex II 2 D Ex tb IIIC T80°C Db IP65

EUT 14 ATEX 1155; IECEx CQM 11.0026X; KZ.7500525.22.01.00380 (CU-TR)

EN 60079-0, EN 60079-1, EN 60079-7, EN 60079-31

IEC 60079-0, IEC 60079-1, IEC 60079-7, IEC 60079-31

Copper-free aluminium, powder coated surface, yellow (RAL1021)

Toughened glass, stands 4J impact

Stainless steel

100V, 110V, 120V, 127V, 220V, 230V, 240V AC 50/60Hz

LED

< 10W (continuous work)

Red

> 200cd

16, 20, 30, 40, 60, 80, 120, 240 (times/min)

M5 (internal & external earth bolts)

IP65

-20°C~+55°C

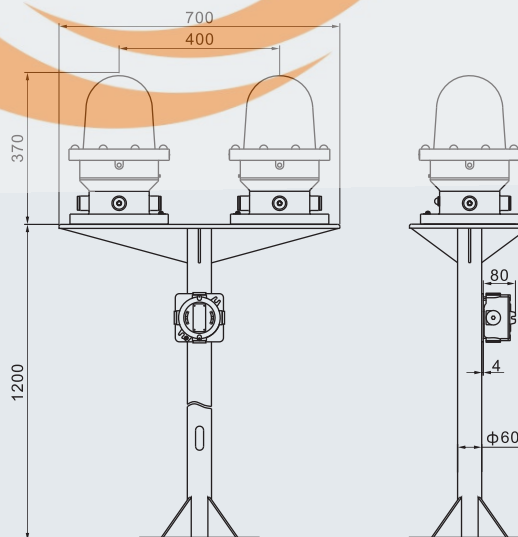
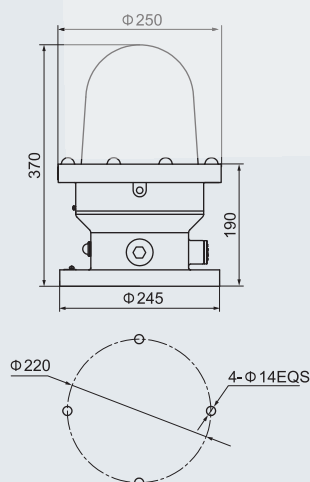
3 x 1.5~2.5mm<sup>2</sup> (L+N+PE)

4 x M25 x 1.5 plugs

DQM-I (Ex e) is recommended. Please see P7/17~19.

10kg

#### Dimension drawings (all dimensions in mm) - subject to alteration



Drawings of main (spare) caution spotlight fittings

Note: The light fitting consists of two completely independent photoelectric control systems which can control the main and spare lamps respectively. Generally, the main lamp is used for night lighting, and it will be shut down automatically during the day. If the main lamp is damaged, the spare lamp will be started automatically to be substituted for main lamp.